

PWYLLGOR:	Pwyllgor Archwilio
DYDDIAD:	10 Rhagfyr 2014
TEITL YR ADRODDIAD:	Adroddiad Cynnydd a Chyfrifon Cymunedau'n Gyntaf Môn 13-14
AWDUR:	Jenny Whiston, Rheolwr Grantiau
AELOD PORTFFOLIO:	Y Cynghorydd Kenneth P Hughes
PENNAETH GWASANAETH:	Shan Lloyd Williams - Pennaeth Gwasanaeth Tai
PWRPAS YR ADRODDIAD:	Cyflwyno Cyfrifon Cymunedau'n Gyntaf ar gyfer 2013 /14 a rhoi gwybod i'r Aelodau am y cynnydd a wnaed

Cefndir

Cyflwynwyd Cymunedau'n Gyntaf (CG) yng Nghymru yn 2001 gan Lywodraeth Cynulliad Cymru (LICC) fel rhaglen flaengar i wella'r amodau byw a'r rhagolygon i drigolion y cymunedau mwyaf difreintiedig ar draws Cymru. Y mae bellach yn un o brif Raglenni Llywodraeth Cymru ar gyfer mynd i'r afael â Thlodi.

Yr Awdurdod yw'r Corff Cyflawni Arweiniol ar gyfer £1.658m o gyllid am y cyfnod 1.2.2013 i 31.3.2015 a Chymunedau'n Gyntaf Môn Cyf., sef cwmni a gyfyngir â gwarant ac elusen gofrestrdedig yw'r Sefydliad Cyflawni. Fel y Corff Cyflawni Arweiniol (CCA), yr Awdurdod sy'n gyfrifol am 'sichau llywodraethu ac atebolrwydd da yng ngweithgareddau'r Clwstwr'. Mae Cytundeb Cyfreithiol yn ei le rhwng yr Awdurdod a Cymunedau'n Gyntaf Môn Cyf i ddarparu'r Rhaglen. Yn unol â'r Cytundeb, rhaid i Cymunedau'n Gyntaf Môn Cyf gyflwyno eu Cyfrifon Blynnyddol (Atodiad 1) i'r Pwyllgor Archwilio. Gellir gweld dadansoddiad o'r gwariant am 13/14 a 14/15 yn Atodiad 1.

Mae i Cymunedau'n Gyntaf ffocws daearyddol, ac mae'n canolbwyntio ar y 10% o'r cymunedau mwyaf difreintiedig ar yr Ynys. Mae'r ardal dan sylw yn cynnwys 7 o ardaloedd cynnyrch ehangach haen is [LSOA], sef Morawelon, Porthyfelin 1, Tref Caergybi, Maeshyfyd, Ffordd Llundain a Kingsland yng Nghaergybi yn ogystal â Ward Tudur yn Llangefni. Mae pedwar o'r rhain ymysg y 10% o'r wardiau mwyaf difreintiedig yn ôl un neu ragor o fynegeion amddifadedd lluosog Cymru ac mae pob un ohonynt ymysg y 20% o'r cymunedau mwyaf difreintiedig yn gyffredinol.

Mae nodau ac amcanion y cwmni wedi cael eu nodi yn y Memorandwm a'r Erthyglau fel:

'Cefnogi'r bobl mwyaf amddifad yn yr ardaloedd mwyaf difreintiedig o Ynys Môn gyda'r nod o gyfrannu at liniaru tlodi cyson, canolbwyntio ar gamau gweithredu sy'n seiliedig yn y gymuned, gweithio ochr yn ochr â rhaglenni eraill i gau'r bylchau o ran addysg, sgiliau, yr economi ac iechyd rhwng yr ardaloedd mwyaf difreintiedig ac ardaloedd mwy cefnog.'

Cynnydd Cymunedau'n Gyntaf

Mae Cymunedau'n Gyntaf wedi datblygu'n gyflym iawn dros yr 18 mis diwethaf a chafwyd cynnydd yn nifer y staff y mae'r sefydliad yn eu cyflogi ar hyn o bryd a'r cyllid y bu modd ei sicrhau. Ar hyn o bryd, mae 30 aelod staff yn cael eu cyflogi ac roedd trosiant y cwmni yn 13/14 ychydig dros £1m. Gweler Siart Sefydliad yn Atodiad 3).

Rheolir Cymunedau'n Gyntaf Môn Cyf. gan Fwrdd o Gyfarwyddwyr gwirfoddol sydd hefyd yn cynnwys yr Aelod Portffolio ar gyfer Tai a Gwasanaethau Cymdeithasol a Swyddogion fel sylwedyddion.

Fel cwmni sydd wedi ei gyfyngu â gwarant ac elusen, mae'r sefydliad yn medru sicrhau cyllid allanol ychwanegol i gynorthwyo gyda darparu gwasanaethau Cymunedau'n Gyntaf yn yr ardal. Mae hwn yn gyllid na fyddai'r Awdurdod fel corff cyhoeddus wedi bod yn gymwys i wneud cais amdano o bosib. Maent wedi bod yn hynod lwyddiannus yn sicrhau cyllid ychwanegol o nifer o ffynonellau fel y manylir ar hynny yn y Cyfrifon er mwyn cefnogi'r gwaith a wnaed gan CM yn ystod 2013/14. Penodwyd Williams Denton yn archwilwyr y cwmni ac maent wedi archwilio datganiadau ariannol Cymunedau'n Gyntaf Môn ac, yn eu barn nhw, mae'r datganiadau ariannol:

'Give a true and fair view of the state of the charitable company's affairs as at 31 March 2014 and of its incoming resources and application of resources, including its income and expenditure, for the year then ended.'

'Have been properly prepared in accordance with United Kingdom Generally Accepted Accounting Practice.'

'Have been prepared in accordance with the requirements of the Companies Act 2006.'

Nid oedd Williams Denton wedi dod o hyd i unrhyw faterion yr oedd angen adrodd arnynt.

Argymhellion

Gofynnir i'r Aelodau:

Nodi cynnwys yr Adroddiad a'r Cyfrifon

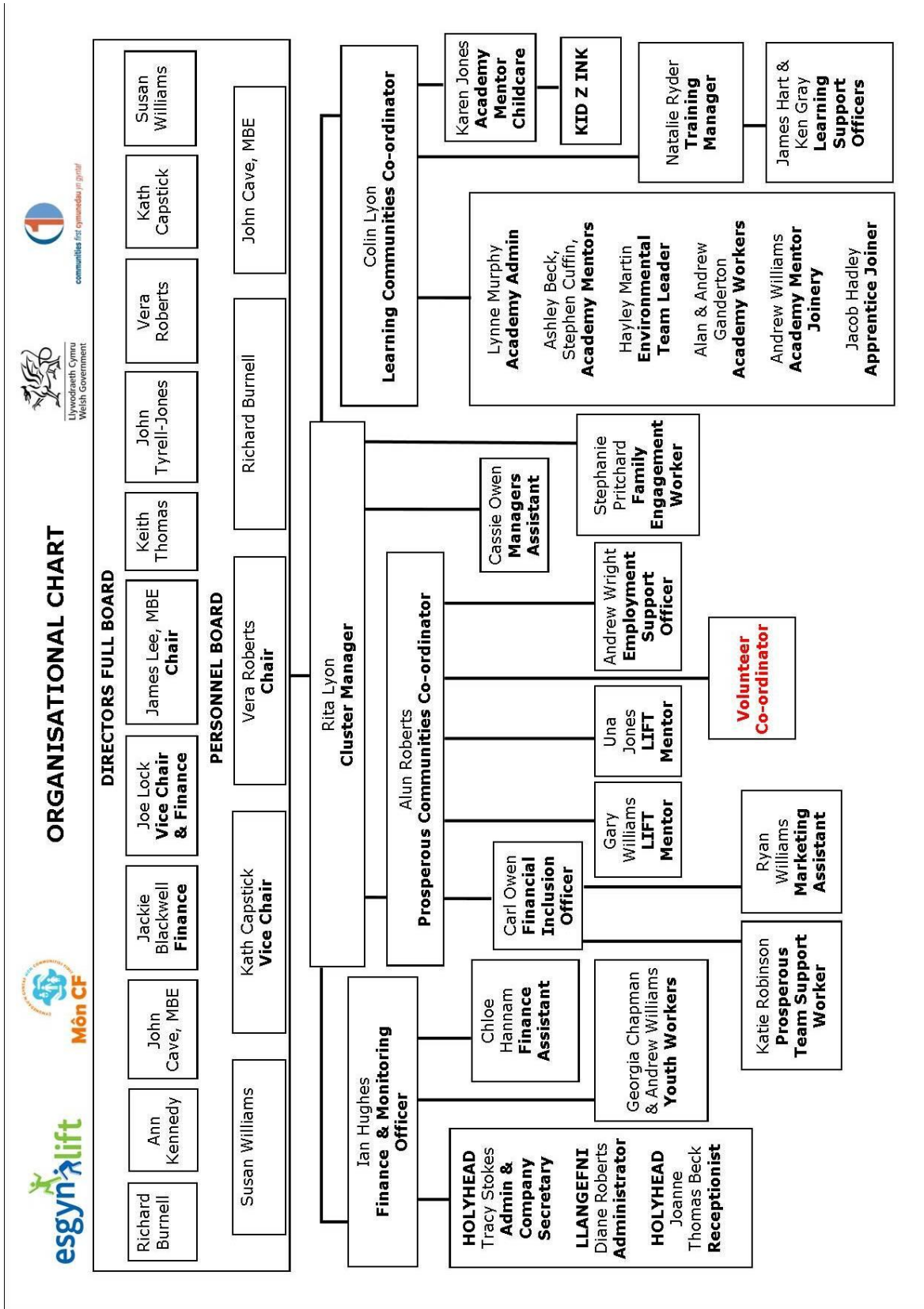
Awdur yr Adroddiad: Jenny Whiston, Rheolydd Grantiau

Dyddiad yr Adroddiad: 26.11.2014

Cyllid Cymunedau'n Gyntaf

	Gwariant Gwirioneddol 13/14	Cyllideb 14/15
	£	£
Cyflogau	439,657	555,874
Ffioedd Rheoli	19,057	23,643
Teithio a Chynhaliaeth	6,257	16,684
Hyfforddiant	2,817	5,100
Costau Adeiladau	94,004	65,327
Cynllun Ymgysylltiad Cymunedol	23,346	25,000
Costau Prosiect	59,485	105,530
Costau LDB	18,535	23,736
Cyfanswm	663,158	820,894
Hawliwyd	663,158	

SIART TREFNIADOL



REGISTERED COMPANY NUMBER: 08085673 (England and Wales)
REGISTERED CHARITY NUMBER: 1148502

**REPORT OF THE TRUSTEES AND
FINANCIAL STATEMENTS FOR THE YEAR
ENDED 31 MARCH 2014
FOR**

**CYMUNEDAU'N GYNTAF MON
COMMUNITIES FIRST**

**CONTENTS OF THE FINANCIAL STATEMENTS
FOR THE YEAR ENDED 31 MARCH 2014**

	Page
Report of the Trustees	1 to 7
Report of the Independent Auditors	8 to 9
Statement of Financial Activities	10
Balance Sheet	11
Notes to the Financial Statements	12 to 22

CYMUNEDAU'N GYNTAF MON COMMUNITIES FIRST

REPORT OF THE TRUSTEES FOR THE YEAR ENDED 31 MARCH 2014

The trustees who are also directors of the charity for the purposes of the Companies Act 2006, present their report with the financial statements of the charity for the year ended 31 March 2014. The trustees have adopted the provisions of the Statement of Recommended Practice (SORP) 'Accounting and Reporting by Charities' issued in March 2005.

REFERENCE AND ADMINISTRATIVE DETAILS

Registered Company number

08085673 (England and Wales)

Registered Charity number

1148502

Registered office

63 Market Street
Holyhead
Ynys Mon
LL65 1UN

Trustees

J N Lee
Mrs V M Roberts
Mrs A Kennedy
Mrs J A Blackwell
Mrs K Capstick
K Thomas
Mrs S F Williams
J N Lock
J R Jones - appointed 10.4.13
- resigned 26.11.13
J Tyrell-Jones - appointed 26.11.13
J G H Cave - appointed 26.11.13
R Burnell - appointed 26.11.13

Company Secretary

Mrs T J Stokes

Auditors

Williams Denton Cyf
Chartered Certified Accountants
Statutory Auditors
Glaslyn
Ffordd Y Parc
Parc Menai
Bangor
Gwynedd
LL57 4FE

Solicitors

T R Evans Hughes & Co
6 Victoria Chambers
Holyhead
LL65 1UR

**REPORT OF THE TRUSTEES
FOR THE YEAR ENDED 31 MARCH 2014**

REFERENCE AND ADMINISTRATIVE DETAILS

Bankers

HSBC
William Street
Holyhead
LL65 1RL

Senior Management Team

Rita Lyon	Cluster Manager
Alun Roberts	Prosperous Communities Co-ordinator
Colin Lyon	Learning Communities Co-ordinator
Ian Hughes	Finance and Monitoring Officer

STRUCTURE, GOVERNANCE AND MANAGEMENT

Governing document

The organisation is a charitable company limited by guarantee and governed by its Memorandum of Association dated 28 May 2012. It was registered with the Charity Commission on 09 August 2012. In the event of the company being wound up members are required to contribute an amount not exceeding £10.

Recruitment and appointment of new trustees

The Cymunedau'n Gyntaf Mon Communities First is made up from the community/statutory and business/voluntary sector representatives.

The process of appointing trustees/directors has been set out in the Memorandum and Articles and is as follows:

The charity may by ordinary resolution appoint a person who is willing to act to be trustee/director and determine the rotation in which any additional trustees/directors are to retire. No person other than a trustee/director retiring by rotation may be appointed a trustee/director at any general meeting unless he or she is recommended for re-election by the trustees/directors, or not less than fourteen nor more than thirty-five clear days before the date of the meeting, the charity is given a notice that is signed by a member entitled to vote at the meeting, states the member's intention to propose the appointment of a person as a trustee/director, contains the details that, if the person were to be appointed, the charity would have to file at Companies House, and is signed by the person who is to be proposed to show his or her willingness to be appointed. The trustees/directors may appoint a person who is willing to act to be a trustee/director. A trustee/director appointed by a resolution of the other trustees/directors must retire at the next annual general meeting and must not be taken into account in determining the trustees/directors which are to retire by rotation.

All members who are entitled to receive notice must receive a minimum of twenty-one clear days notice of an annual general meeting or a general meeting called for the passing of a special resolution. Fourteen clear days must be given for all other general meetings.

A trustee/director must be a natural person aged 16 years or older. No one may be appointed a trustee/director if he or she would be disqualified from acting under the provisions of article 39. The number of trustees/directors shall be a minimum of 10 but (unless otherwise determined by ordinary resolution) shall not be subject to any maximum. The first trustees/directors shall be those persons notified to Companies House as the first trustees/directors of the charity. A trustee/director may not appoint an alternate trustee/director or anyone to act on his or her behalf at meetings of the trustees/directors.

CYMUNEDAU'N GYNTAF MON COMMUNITIES FIRST

REPORT OF THE TRUSTEES FOR THE YEAR ENDED 31 MARCH 2014

STRUCTURE, GOVERNANCE AND MANAGEMENT

Induction and training of new trustees

Existing trustees are already familiar with the practical work of the charity having been members of the charity and attended most meetings. All new trustees are offered relevant and specific training.

Additionally, new trustees are invited and encouraged to attend training sessions to familiarise themselves with the charity and the context within which it operates.

Trustees should look to develop arrangements which enable people from all sections of the community to be actively involved in the selection and regular renewal of their membership.

Trustees should also help to prepare, with the assistance if need be of external support organisations (eg the local authority, the county voluntary council, the Communities First Support Network), a constitution and rules of conduct for consideration and approval by the charity. Trustees should provide support to local community organisations/groups to enable them to join the charity and contribute to its work.

Achievement and performance of trustees

Mr James Neil Lee received an M.B.E from his Royal Highness the Prince of Wales for outstanding services to the community.

The directors attended a Governance and Financial Management Advice training course held by Shirley David of Best UK, where she also produced a report highlighting areas of weakness within the organisation's governance and her recommendations.

Organisational structure

The Cymunedau'n Gyntaf Mon Communities First has a Board of Directors /Trustees of at least 10 members who meet a minimum of four times a year and are responsible for the strategic direction and policy of the charitable company. The Cluster manager also sits on the Board but has no voting rights.

The Senior Management team are responsible for the day-to-day operational management including individual supervision of the staff team and also for ensuring that the team continue to develop their skills and working practices in line with good practice. The Senior Management team is responsible for ensuring the delivery of the services specified and that key performance indicators are met. The Senior Management team are line managed by the Chair of the personnel group.

Related parties

Due to the nature of the charity's operations and the composition of the board of trustees it is inevitable that transactions will take place with organisations in which a member may have an interest. All transactions involving organisations in which a trustee may have an interest are conducted at arm's length. The Charity has a policy that all trustees must declare an interest if a related party transaction occurs.

**REPORT OF THE TRUSTEES
FOR THE YEAR ENDED 31 MARCH 2014**

STRUCTURE, GOVERNANCE AND MANAGEMENT

Risk management

A scheme of delegation is in place and day to day responsibility for the provision of the services rest with the Cluster manager and management team. The Cluster manager is responsible for ensuring that the charity delivers the services specified and that key performance indicators are met. The Cluster manager has responsibility for the day to day operational management of the Charity, individual supervision of the staff team and also ensuring that the team continue to develop their skills and working practices in line with good practice.

The Senior Management team has conducted a review of the company's policies. Where appropriate, systems and procedures have been established to manage the company's finances. Significant external risks to funding will lead to the development of a strategic plan which will allow for the diversification of funding and activities. Internal control risks are minimised by the implementation of procedures for authorising of all transactions and projects.

The trustees have a duty to identify and review the risks to which the charity is exposed and to ensure appropriate controls are in place to provide reasonable assurance against fraud and error.

The trustees reviewed the Governance and Financial Management report produced by Shirley David of Best UK on the 5th February. Included in the discussions was a report produced by the Cluster Manager on the recommendations from Shirley David. Points of discussion included the potential risk list the management has produced, their potential impact and the steps to mitigate the identified risk. The declaration of personal interests policy was amended and is to be reviewed annually.

OBJECTIVES AND ACTIVITIES

Objectives and aims

Mission statement

By Listening and working with our community within the Mon Communities First area, we aim to regenerate the environment for existing and future generations.

The company's aims and objectives are set out in the Memorandum and Articles as follows:

To support the most disadvantaged people in the most deprived areas of the Isle of Anglesey with the aim of contributing to alleviating persistent poverty, focussed on community supported actions, working alongside other programmes to narrow the education, skills, economic and health gaps between the most deprived and more affluent areas.

Significant activities

Working within the Communities First "Vision Framework", a number of key themes and projects have been carried out during the year.

Public benefit

Our main activities and whom we try to help are described below. All our charitable activities focus on helping local people of all ages to become more involved in their local community by taking part in community work projects such as environment, support social events, build community spirit and help improve their own lives and the lives of others in the community.

**REPORT OF THE TRUSTEES
FOR THE YEAR ENDED 31 MARCH 2014**

ACHIEVEMENT AND PERFORMANCE

How our activities deliver public benefit

Credit Union

During the year we have established two Credit Union collection points, one in Llangefni and one in Holyhead. A steady growth of junior and adult savings accounts and loan applications were seen over the year. This service has enabled individuals who would not have been able to secure loans through the mainstream high street banks due to various circumstances to have access to affordable finance rather than using pay day loans or doorstep lenders.

Pantri Pobl

Liaising with partner organisations a food bank service was introduced so that even those dire financial circumstances would not go without anything to eat. This service also ensures that everyone who receives a food bag also receives financial aid through budgeting advice and information about what help is available to them. Unfortunately there was a continuous increase in the use of this service during the year, demonstrating the difficulties the people of Anglesey currently find themselves in financially.

Lift

The LIFT project is aimed at assisting people who are classed as living in a 'workless households' into work based training, volunteer work, work placement or into employment. A workless household is where no member of the household has been in employment of 16 hours or more for a period of six months or more. During the year the LIFT team actively worked with 75 clients. Of which 32 took part in work based training, 27 completed work placement or volunteering work whilst 9 moved into full time employment.

Employment Support & Engagement

The project will deliver a local employability service to those individuals of working age (16-64+) who are economically inactive, unemployed or at work entry level. The project will provide a coordinating function to broker links between local vocational guidance, learning & training, employment and other employability support services at grass roots level to plan and make the best use of existing provision to help workless people on the journey into work.

Splash

The Splash Project is a YJB funded project to deliver a programme of diversionary activities, aimed at young people living in communities first cluster areas in Holyhead and Llangefni aged between 10-14. In this last year, the splash project has engaged with 106 young people in Holyhead and Llangefni (79-Holyhead / 27-Llangefni) delivering 67 sessions. During the programme, registered young people take part in free activities such as - sports, arts&crafts, music workshops and trips.

TOM's

The TOM's project is a time banking scheme for young people aged 10-17 living in Holyhead. We currently have 15 members who regularly attend sessions. Most projects have an element of community work - for their efforts on these project's, young people are given a 'point per hour' that can be spent on trips. We have recently been working on a Community Art project (that will be attached to a youth accreditation) and have a reward trip planned in October.

Explorers

The Explorers group is a time banking scheme for young people aged 10-17 living in Llangefni. We currently have 8 members who regularly attend sessions. Most projects have an element of community work - for their efforts on these project's, young people are given a 'point per hour' that can be spent on trips. We have recently been working on a Community Art project (that will be attached to a youth accreditation) and have a reward trip planned in October.

Sam's Night

Sam's Night is a targeted project aimed at young people aged between 14-17. This year we have delivered 2 events to 27 young people. These sessions were targeted towards young people in pupil referral units or that were identified as 'at risk of becoming NEET's' from High Schools in Holyhead and Llangefni. The purpose of the events were to deliver sessions in Alcohol Awareness, Drugs Awareness, Sexual Health, Cyber Bullying and Drink Driving in a more engaging and lasting way. The project was a joint effort between ourselves, Project Lydia, Fire Service and the statutory youth service.

**REPORT OF THE TRUSTEES
FOR THE YEAR ENDED 31 MARCH 2014**

ACHIEVEMENT AND PERFORMANCE

How our activities deliver public benefit

Accredited Centre

During the year we have successfully become an accredited training centre for Chartered Institute of Environmental Health (CIEH) that allows us to deliver courses at Level 2 in Manual Handling and Health and Safety in the Workplace. We have also become an accredited training centre for Agored delivering courses in Manual Handling and Exercise as Part of a Healthy Lifestyle. The Vocational Training academy was also approved as a LANTRA Centre delivering courses for ride on mower, pedestrian mower and brush cutter.

Car Driving Courses

We have delivered a number of first step to driving courses from our academy where students were given the tools to help them understand the basics and a reality check of driving and owning a car. The training includes basic skills such as costs of petrol to different locations, breakdown of insurance, tax, tyres, servicing/ maintenance, fines and penalty points. The students received intensive training on the theory side of driving to help them towards passing their theory tests. Wherever possible the students also had three sessions in our driving similar to get used to driving in a full size car.

FINANCIAL REVIEW

Financial review

During the year there was a surplus of £187,938 (£41,978 on unrestricted funds and £145,960 on restricted funds). The unrestricted surplus of £41,978 and was mainly due to the cash donated from Plas Cybi Partnership (£48,780) when it ceased its operations. The restricted surplus was £145,960 and was mainly due to the assets (£105,867) transferred from Plas Cybi Partnership when it ceased its operations.

The unrestricted funds have therefore increased from £3,688 at the beginning of the year to £42,693 at 31/03/14.

The restricted funds have therefore increased from £2,524 at the beginning of the year to £151,457 at 31/03/14 of which £137,098 represent the net book value of the charity's fixed assets.

Reserves Policy

The Trustees have examined the charity's requirements for reserves in light of the main risks to the organisation. It has established a policy whereby the unrestricted funds not committed or invested in fixed assets held by the charity should be between 3 and 6 months of expenditure. The present level of the general fund meets this criteria.

Principal funding sources

The principal funding sources for the company were by way of grants from the Welsh Government.

Continuation of funding

Funding from Welsh Government in terms of the Communities First programme is guaranteed until 31 March 2015. A bid for further funding to 31 March 2016 has been submitted with a decision expected in December 2014. It is expected that the Communities First programme will run until the end of the current Welsh Assembly in 2016 and as Mon Communities First are one of the top performing Communities First partnerships in Wales it is likely its funding will continue until then.

FUTURE DEVELOPMENTS

The charity plans to continue with the activities outlined above in the forthcoming years subject to satisfactory funding arrangements.

CYMUNEDAU'N GYNTAF MON COMMUNITIES FIRST

**REPORT OF THE TRUSTEES
FOR THE YEAR ENDED 31 MARCH 2014**

STATEMENT OF TRUSTEES RESPONSIBILITIES

The trustees (who are also the directors of Cymunedau'n Gyntaf Mon Communities First for the purposes of company law) are responsible for preparing the Report of the Trustees and the financial statements in accordance with applicable law and United Kingdom Accounting Standards (United Kingdom Generally Accepted Accounting Practice).

Company law requires the trustees to prepare financial statements for each financial year which give a true and fair view of the state of affairs of the charitable company and of the incoming resources and application of resources, including the income and expenditure, of the charitable company for that period. In preparing those financial statements, the trustees are required to

- select suitable accounting policies and then apply them consistently;
- observe the methods and principles in the Charity SORP;
- make judgements and estimates that are reasonable and prudent;
- prepare the financial statements on the going concern basis unless it is inappropriate to presume that the charitable company will continue in business.

The trustees are responsible for keeping proper accounting records which disclose with reasonable accuracy at any time the financial position of the charitable company and to enable them to ensure that the financial statements comply with the Companies Act 2006. They are also responsible for safeguarding the assets of the charitable company and hence for taking reasonable steps for the prevention and detection of fraud and other irregularities.

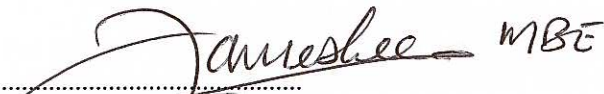
In so far as the trustees are aware:

- there is no relevant audit information of which the charitable company's auditors are unaware; and
- the trustees have taken all steps that they ought to have taken to make themselves aware of any relevant audit information and to establish that the auditors are aware of that information.

AUDITORS

The auditors, Williams Denton Cyf, will be proposed for re-appointment at the forthcoming Annual General Meeting.

ON BEHALF OF THE BOARD:

 MBE
.....
JN Lee - Trustee

Date: 04. 11. 2014

REPORT OF THE INDEPENDENT AUDITORS TO THE MEMBERS OF CYMUNEDAU'N GYNTAF MON COMMUNITIES FIRST

We have audited the financial statements of Cymunedau'n Gyntaf Mon Communities First for the year ended 31 March 2014 on pages ten to twenty two. The financial reporting framework that has been applied in their preparation is applicable law and the Financial Reporting Standard for Smaller Entities (effective April 2008) (United Kingdom Generally Accepted Accounting Practice applicable to Smaller Entities).

This report is made solely to the charitable company's members, as a body, in accordance with Chapter 3 of Part 16 of the Companies Act 2006. Our audit work has been undertaken so that we might state to the charitable company's members those matters we are required to state to them in an auditors' report and for no other purpose. To the fullest extent permitted by law, we do not accept or assume responsibility to anyone other than the charitable company and the charitable company's members as a body, for our audit work, for this report, or for the opinions we have formed.

Respective responsibilities of trustees and auditors

As explained more fully in the Statement of Trustees Responsibilities set out on page seven, the trustees (who are also the directors of the charitable company for the purposes of company law) are responsible for the preparation of the financial statements and for being satisfied that they give a true and fair view.

Our responsibility is to audit and express an opinion on the financial statements in accordance with applicable law and International Standards on Auditing (UK and Ireland). Those standards require us to comply with the Auditing Practices Board's Ethical Standards for Auditors.

Scope of the audit of the financial statements

An audit involves obtaining evidence about the amounts and disclosures in the financial statements sufficient to give reasonable assurance that the financial statements are free from material misstatement, whether caused by fraud or error. This includes an assessment of: whether the accounting policies are appropriate to the charitable company's circumstances and have been consistently applied and adequately disclosed; the reasonableness of significant accounting estimates made by the trustees; and the overall presentation of the financial statements. In addition, we read all the financial and non-financial information in the Report of the Trustees to identify material inconsistencies with the audited financial statements and to identify any information that is apparently materially incorrect based on, or materially inconsistent with, the knowledge acquired by us in the course of performing the audit. If we become aware of any apparent material misstatements or inconsistencies we consider the implications for our report.

Opinion on financial statements

In our opinion the financial statements:

- give a true and fair view of the state of the charitable company's affairs as at 31 March 2014 and of its incoming resources and application of resources, including its income and expenditure, for the year then ended;
- have been properly prepared in accordance with United Kingdom Generally Accepted Accounting Practice; and
- have been prepared in accordance with the requirements of the Companies Act 2006.

Emphasis of matter

We draw attention to note 15 in the financial statements which describes the uncertainty of Welsh Government funding beyond 31 March 2015. Our opinion is not qualified in respect of this matter.

Opinion on other matter prescribed by the Companies Act 2006

In our opinion the information given in the Report of the Trustees for the financial year for which the financial statements are prepared is consistent with the financial statements.

**REPORT OF THE INDEPENDENT AUDITORS TO THE MEMBERS OF
CYMUNEDAU'N GYNTAF MON COMMUNITIES FIRST**

Matters on which we are required to report by exception

We have nothing to report in respect of the following matters where the Companies Act 2006 requires us to report to you if, in our opinion:

- adequate accounting records have not been kept or returns adequate for our audit have not been received from branches not visited by us; or
- the financial statements are not in agreement with the accounting records and returns; or
- certain disclosures of trustees' remuneration specified by law are not made; or
- we have not received all the information and explanations we require for our audit; or
- the trustees were not entitled to prepare the financial statements in accordance with the small companies regime and take advantage of the small companies exemption from the requirement to prepare a Strategic Report or in preparing the Report of the Trustees.



Colin Bell FCCA (Senior Statutory Auditor)
for and on behalf of Williams Denton Cyf
Chartered Certified Accountants
Statutory Auditors
Glaslyn
Ffordd Y Parc
Parc Menai
Bangor
Gwynedd
LL57 4FE

Date: 13/11/2014

CYMUNEDAU'N GYNTAF MON COMMUNITIES FIRST

STATEMENT OF FINANCIAL ACTIVITIES
(INCORPORATING AN INCOME AND EXPENDITURE ACCOUNT)
FOR THE YEAR ENDED 31 MARCH 2014

	Notes	Unrestricted funds £	Restricted funds £	Year Ended 31.3.14 Total funds £	Period 28.5.12 to 31.3.13 Total funds £
INCOMING RESOURCES					
Incoming resources from generated funds					
Voluntary income	2	49,641	1,038,116	1,087,757	222,555
Activities for generating funds	3	<u>22,415</u>	<u>-</u>	<u>22,415</u>	<u>906</u>
Total incoming resources		72,056	1,038,116	1,110,172	223,461
RESOURCES EXPENDED					
Costs of generating funds					
Fundraising trading: cost of goods sold and other costs	4	8,731	-	8,731	130
Charitable activities	5	18,767	882,818	901,585	208,587
Community regeneration		2,580	9,338	11,918	8,532
Governance costs	6	<u>2,580</u>	<u>9,338</u>	<u>11,918</u>	<u>8,532</u>
Total resources expended		<u>30,078</u>	<u>892,156</u>	<u>922,234</u>	<u>217,249</u>
NET INCOMING RESOURCES BEFORE TRANSFERS					
		41,978	145,960	187,938	6,212
Gross transfers between funds	13	<u>(2,973)</u>	<u>2,973</u>	<u>-</u>	<u>-</u>
Net incoming/(outgoing) resources		39,005	148,933	187,938	6,212
RECONCILIATION OF FUNDS					
Total funds brought forward		<u>3,688</u>	<u>2,524</u>	<u>6,212</u>	<u>-</u>
TOTAL FUNDS CARRIED FORWARD		<u><u>42,693</u></u>	<u><u>151,457</u></u>	<u><u>194,150</u></u>	<u><u>6,212</u></u>

The notes form part of these financial statements

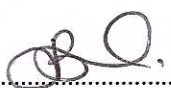
CYMUNEDAU'N GYNTAF MON COMMUNITIES FIRST

**BALANCE SHEET
AT 31 MARCH 2014**

	Notes	Unrestricted funds £	Restricted funds £	31.3.14 Total funds £	31.3.13 Total funds £
FIXED ASSETS					
Tangible assets	10	-	137,098	137,098	5,219
CURRENT ASSETS					
Debtors	11	15,666	53,880	69,546	737
Cash at bank		<u>29,609</u>	<u>(22,382)</u>	<u>7,227</u>	<u>17,464</u>
		45,275	31,498	76,773	18,201
CREDITORS					
Amounts falling due within one year	12	(2,582)	(17,139)	(19,721)	(17,208)
NET CURRENT ASSETS					
		<u>42,693</u>	<u>14,359</u>	<u>57,052</u>	<u>993</u>
TOTAL ASSETS LESS CURRENT LIABILITIES					
		<u>42,693</u>	<u>151,457</u>	<u>194,150</u>	<u>6,212</u>
NET ASSETS					
		<u>42,693</u>	<u>151,457</u>	<u>194,150</u>	<u>6,212</u>
FUNDS					
Unrestricted funds	13			42,693	3,688
Restricted funds				<u>151,457</u>	<u>2,524</u>
TOTAL FUNDS					
				<u>194,150</u>	<u>6,212</u>

These financial statements have been prepared in accordance with the special provisions of Part 15 of the Companies Act 2006 relating to small charitable companies and with the Financial Reporting Standard for Smaller Entities (effective April 2008).

The financial statements were approved by the Board of Trustees on 04/11/2014 and were signed on its behalf by:


.....
Mrs J A Blackwell -Trustee


.....
J N Lee -Trustee

The notes form part of these financial statements

**NOTES TO THE FINANCIAL STATEMENTS
FOR THE YEAR ENDED 31 MARCH 2014**

1. ACCOUNTING POLICIES

Accounting convention

The financial statements have been prepared under the historical cost convention, and in accordance with the Financial Reporting Standard for Smaller Entities (effective April 2008), the Companies Act 2006 and the requirements of the Statement of Recommended Practice, Accounting and Reporting by Charities.

Incoming resources

All incoming resources are included on the Statement of Financial Activities when the charity is entitled to the income and the amount can be quantified with reasonable accuracy. The following specific policies are applied to particular categories of income:

Grants and contracts, where entitlement is not conditional on the delivery of a specific performance by the charity, are recognised when the charity becomes unconditionally entitled to the grant.

Incoming resources from grants and contracts, where related to performance and specific deliverables, are accounted for as the charity earns the right to consideration by its performance.

Capital grants for the purchase of fixed assets are recognised in full in the Statement of Financial Activities in the year in which they are received.

Voluntary income, donations, fundraising, investment income and interest are recognised in full in the Statement of Financial Activities in the year/period that they are received.

Donated services and facilities are included at the value to the charity where this can be quantified. The value of services provided by volunteers has not been included in these financial statements.

Resources expended

Resources expended are included in the Statement of Financial Activities on an accruals basis, inclusive of any VAT.

Costs of generating funds comprise the costs associated with attracting voluntary income and the costs for fundraising purposes.

Charitable expenditure comprises those costs incurred by the charity in the delivery of its activities and services. It includes both costs that can be allocated directly to such activities and those costs of an indirect nature necessary to support them.

Governance costs include those costs associated with meeting the constitutional and statutory requirements of the charity and include the audit fees and costs linked to the strategic management of the charity.

Tangible fixed assets

Depreciation is provided at the following annual rates in order to write off each asset over its estimated useful life.

Freehold property	- 2% on cost
Plant and machinery	- 25% on cost
Motor vehicles	- 25% on reducing balance

Individual assets costing less than £1,000 are included in the Statement of Financial Activities in the year that they are incurred. Individual assets greater than £1,000 are included in the balance sheet at cost and are depreciated as above.

Taxation

The charity is exempt from corporation tax on its charitable activities.

1. ACCOUNTING POLICIES - continued

Fund accounting

Unrestricted funds can be used in accordance with the charitable objectives at the discretion of the trustees.

Restricted funds can only be used for particular restricted purposes within the objects of the charity. Restrictions arise when specified by the donor or when funds are raised for particular restricted purposes.

Further explanation of the nature and purpose of each fund is included in the notes to the financial statements.

Pension costs and other post-retirement benefits

The charitable company operates a defined contribution pension scheme. Contributions payable to the charitable company's pension scheme are charged to the Statement of Financial Activities in the period to which they relate.

**NOTES TO THE FINANCIAL STATEMENTS - CONTINUED
FOR THE YEAR ENDED 31 MARCH 2014**

2. VOLUNTARY INCOME

	Year Ended 31.3.14 £	Period 28.5.12 to 31.3.13 £
Donations	49,157	223
Donated assets	118,887	-
Grants	919,229	219,751
Other income	484	2,581
	<u>1,087,757</u>	<u>222,555</u>

Donations includes £48,780 from Plas Cybi Partnership.

Donated assets includes £105,867 of assets transferred from Plas Cybi Partnership and van from the Anglesey Aluminium Legacy Fund valued at £13,000.

Grants received, included in the above, are as follows:

	Year Ended 31.3.14 £	Period 28.5.12 to 31.3.13 £
WG-Communities First	644,623	170,656
YMCC - CSF	-	9,202
Mon Menai - Academy	38,000	7,000
Mon Menai - ESI	70,000	10,000
WCVA - Jobs Growth Wales	35,246	949
YMCC - redundancies	-	21,944
WG-LEQ	5,052	-
Children in need	5,500	-
YMCC-Financial inclusion officer	14,725	-
YMCC-Tackling Poverty SGF	24,486	-
Menter Mon - Cyfenter	9,289	-
Magnox	50,749	-
Bangor University	1,100	-
WG-Splash	20,459	-
	<u>919,229</u>	<u>219,751</u>

Abbreviations used throughout these financial statements:

WG - Welsh Government
YMCC - Ynys Mon County Council
WCVA - Wales Council for Voluntary Action

CYMUNEDAU'N GYNTAF MON COMMUNITIES FIRST

**NOTES TO THE FINANCIAL STATEMENTS - CONTINUED
FOR THE YEAR ENDED 31 MARCH 2014**

3. ACTIVITIES FOR GENERATING FUNDS

	Year Ended 31.3.14 £	Period 28.5.12 to 31.3.13 £
Income from services	17,462	906
Rental income	<u>4,953</u>	<u>-</u>
	<u>22,415</u>	<u>906</u>

4. FUNDRAISING TRADING: COST OF GOODS SOLD AND OTHER COSTS

	Year Ended 31.3.14 £	Period 28.5.12 to 31.3.13 £
Services costs	7,419	130
Rental expenses	<u>1,312</u>	<u>-</u>
	<u>8,731</u>	<u>130</u>

5. CHARITABLE ACTIVITIES COSTS

	Direct costs £	Totals £
Community regeneration	<u>901,585</u>	<u>901,585</u>

6. GOVERNANCE COSTS

	Year Ended 31.3.14 £	Period 28.5.12 to 31.3.13 £
Trustees' expenses	90	13
Accountancy	2,880	1,800
Legal & professional fees	4,218	4,319
AGM and Board costs	530	-
Auditors' remuneration	<u>4,200</u>	<u>2,400</u>
	<u>11,918</u>	<u>8,532</u>

**NOTES TO THE FINANCIAL STATEMENTS - CONTINUED
FOR THE YEAR ENDED 31 MARCH 2014**

7. NET INCOMING/(OUTGOING) RESOURCES

Net resources are stated after charging/(crediting):

	Year Ended 31.3.14	Period 28.5.12 to 31.3.13
	£	£
Auditors' remuneration	4,200	2,400
Depreciation - owned assets	<u>25,892</u>	<u>1,741</u>

8. TRUSTEES' REMUNERATION AND BENEFITS

There were no trustees' remuneration or other benefits for the year ended 31 March 2014 nor for the period ended 31 March 2013.

Trustees' expenses

	Year Ended 31.3.14	Period 28.5.12 to 31.3.13
	£	£
Trustees' expenses	<u>90</u>	<u>13</u>

CYMUNEDAU'N GYNTAF MON COMMUNITIES FIRST

NOTES TO THE FINANCIAL STATEMENTS - CONTINUED
FOR THE YEAR ENDED 31 MARCH 2014

9. STAFF COSTS

	Year Ended 31.3.14	Period 28.5.12 to 31.3.13
	£	£
Wages and salaries	439,673	101,105
Social security costs	35,093	9,873
Other pension costs	35,533	6,010
	<u>510,299</u>	<u>116,988</u>

The average monthly number of employees during the year was as follows:

	Year Ended 31.3.14	Period 28.5.12 to 31.3.13
Cluster Manager	1	1
Development	6.8	9.5
Finance	1	2
Mentors	5.6	4
Youth	2	2
Administration	4.6	2.4
	<u>21</u>	<u>20.9</u>

No employee earned more than £60,000 per annum.

The charity operates a defined contribution pension scheme for its employees and the charity made pension contributions for 22 (2013 - 14) staff members .

NOTES TO THE FINANCIAL STATEMENTS - CONTINUED
FOR THE YEAR ENDED 31 MARCH 2014**10. TANGIBLE FIXED ASSETS**

	Freehold property £	Plant and machinery £	Motor vehicles £	Totals £
COST				
At 1 April 2013	-	6,960	-	6,960
Additions	<u>66,476</u>	<u>72,593</u>	<u>18,702</u>	<u>157,771</u>
At 31 March 2014	<u>66,476</u>	<u>79,553</u>	<u>18,702</u>	<u>164,731</u>
DEPRECIATION				
At 1 April 2013	-	1,741	-	1,741
Charge for year	<u>1,330</u>	<u>19,887</u>	<u>4,675</u>	<u>25,892</u>
At 31 March 2014	<u>1,330</u>	<u>21,628</u>	<u>4,675</u>	<u>27,633</u>
NET BOOK VALUE				
At 31 March 2014	<u>65,146</u>	<u>57,925</u>	<u>14,027</u>	<u>137,098</u>
At 31 March 2013	<u>-</u>	<u>5,219</u>	<u>-</u>	<u>5,219</u>

The Freehold Property was transferred from Plas Cybi Partnership at its original cost value (£72,257) less depreciation to date of transfer (£5,781).

Included in motor vehicles additions is a donated vehicle valued at £13,000.

11. DEBTORS: AMOUNTS FALLING DUE WITHIN ONE YEAR

	31.3.14	31.3.13
	£	£
Debtors	63,204	-
Prepayments	<u>6,342</u>	<u>737</u>
	<u>69,546</u>	<u>737</u>

12. CREDITORS: AMOUNTS FALLING DUE WITHIN ONE YEAR

	31.3.14	31.3.13
	£	£
Creditors	10,141	17,208
Accruals and deferred income	<u>9,580</u>	<u>-</u>
	<u>19,721</u>	<u>17,208</u>

CYMUNEDAU'N GYNTAF MON COMMUNITIES FIRST

NOTES TO THE FINANCIAL STATEMENTS - CONTINUED
FOR THE YEAR ENDED 31 MARCH 2014

13. MOVEMENT IN FUNDS

	At 1.4.13 £	Net movement in funds £	Transfers between funds £	At 31.3.14 £
Unrestricted funds				
General fund	992	41,978	(277)	42,693
Fixed assets	<u>2,696</u>	<u> </u>	<u>(2,696)</u>	<u> </u>
	3,688	41,978	(2,973)	42,693
Restricted funds				
Mon Menai - Academy	-	38	-	38
Mon Menai - ESI	-	155	-	155
YMCC-Financial Inclusion Officer	-	1,164	-	1,164
WG-Splash	-	3,830	-	3,830
Children in need	-	3,995	-	3,995
YMCC-Tackling poverty SGF	-	(277)	277	-
Bangor University	-	487	-	487
Magnox	-	43,575	(38,884)	4,691
Fixed assets (CF)	-	(899)	2,696	1,797
Fixed assets	2,524	(813)	38,884	40,595
Fixed assets (Plas Cybi)	<u>-</u>	<u>94,705</u>	<u>-</u>	<u>94,705</u>
	2,524	145,960	2,973	151,457
	<u> </u>	<u> </u>	<u> </u>	<u> </u>
TOTAL FUNDS	<u>6,212</u>	<u>187,938</u>	<u>-</u>	<u>194,150</u>

**NOTES TO THE FINANCIAL STATEMENTS - CONTINUED
FOR THE YEAR ENDED 31 MARCH 2014**

13. MOVEMENT IN FUNDS - continued

Net movement in funds, included in the above are as follows:

	Incoming resources £	Resources expended £	Movement in funds £
Unrestricted funds			
General fund	72,056	(30,078)	41,978
	<hr/>	<hr/>	<hr/>
	72,056	(30,078)	41,978
Restricted funds			
WG-Communities First	644,622	(644,622)	-
Mon Menai - Academy	38,001	(37,963)	38
Mon Menai - ESI	70,000	(69,845)	155
WCVA-Jobs Growth Wales	35,246	(35,246)	-
YMCC-Financial Inclusion Officer	14,725	(13,561)	1,164
WG-Splash	20,459	(16,629)	3,830
WG-LEQ	5,052	(5,052)	-
Children in need	5,500	(1,505)	3,995
YMCC-Tackling poverty SGF	24,486	(24,763)	(277)
Bangor University	1,100	(613)	487
Menter Mon-Cyfenter	9,289	(9,289)	-
Magnox	50,749	(7,174)	43,575
Fixed assets	13,000	(13,813)	(813)
Fixed assets (Plas Cybi)	105,887	(11,182)	94,705
Fixed assets (CF)	-	(899)	(899)
	<hr/>	<hr/>	<hr/>
	1,038,116	(892,156)	145,960
	<hr/>	<hr/>	<hr/>
TOTAL FUNDS	<u>1,110,172</u>	<u>(922,234)</u>	<u>187,938</u>

CYMUNEDAU'N GYNTAF MON COMMUNITIES FIRST

NOTES TO THE FINANCIAL STATEMENTS - CONTINUED
FOR THE YEAR ENDED 31 MARCH 2014

13. MOVEMENT IN FUNDS - continued

Purpose of Restricted Funds

WG-Communities First

To run and manage the Communities First and Lift programme in the most deprived wards on Anglesey.

Mon Menai - Academy

Funding to set up and run the Community Vocational Academy

Mon Menai - ESI

Funding to continue the Empty Shop Initiative project.

WCVA-Jobs Growth Wales

Funding for employment via the Jobs Growth Wales scheme.

YMCC-Financial inclusion officer

50% funding contribution towards the Financial Inclusion Officer post.

WG-Splash

Monies to run diversionary activities during school holidays.

WG-LEQ

Monies to run community clean up days.

Children in need

Monies to run the Fun 3.30 club.

YMCC-Tackling poverty small grants fund

To facilitate the tackling poverty small grants fund which is a scheme that allows community groups in Communities First areas to apply for small grants.

Bangor University

To deliver community courses.

Menter Mon-Cyfenter

To set up and develop the Shop in Town card scheme.

Magnox

To set up and run a joinery workshop in the Community Vocational Academy and employ a Joiner Mentor.

Fixed Assets

This fund includes assets purchased from restricted income.

Fixed Assets (Plas Cybi)

This fund includes assets transferred from Plas Cybi Partnership.

Fixed Assets (CF)

This fund includes assets purchased with Communities First income.

14. RELATED PARTY DISCLOSURES

Cash (£48,780) and fixed assets (£105,867) were donated from Plas Cybi Partnership, a related charity, during the year.

**NOTES TO THE FINANCIAL STATEMENTS - CONTINUED
FOR THE YEAR ENDED 31 MARCH 2014**

15. GOING CONCERN

Funding from Welsh Government in terms of the Communities First programme is guaranteed until 31 March 2015. A bid for further funding to 31 March 2016 has been submitted with a decision expected in December 2014. It is expected that the Communities First programme will run until the end of the current Welsh Assembly in 2016 and as Mon Communities First are one of the top performing Communities First Partnerships in Wales it is likely its funding will continue until then. The trustees therefore consider it appropriate to prepare the financial statements on a going concern basis.

Mrs R Lyon
Cymunedau'n Gyntaf Mon Communities First
63 Market Street
Holyhead
Anglesey
LL65 1UN

Our ref: CB/AB/P651

13 November 2014

Dear Rita

Cymunedau'n Gyntaf Mon Communities First
Accounts For The Year Ended 31 March 2014

Please find enclosed signed copies of the accounts. I confirm that I have submitted a copy to Companies House.*

You need to send a copy to the Charity Commission.

Yours sincerely



Colin Bell
Director

Enc

* I WILL SUBMIT AFTER THE AGM.

Directors: HUGH PRYS JONES, KEITH BARKER, COLIN BELL, PETER DENTON, JANET JONES, MARTIN BARRETT

Also at: 13 Trinity Square, Llandudno, North Wales LL30 2RB

Registered as auditors and regulated for a range of investment business activities in the United Kingdom by the Association of Chartered Certified Accountants

Registered Office: Williams Denton Cyf, Glaslyn, Ffordd y Parc, Parc Menai, Bangor, Gwynedd LL57 4FE • Company No. 4512849



